

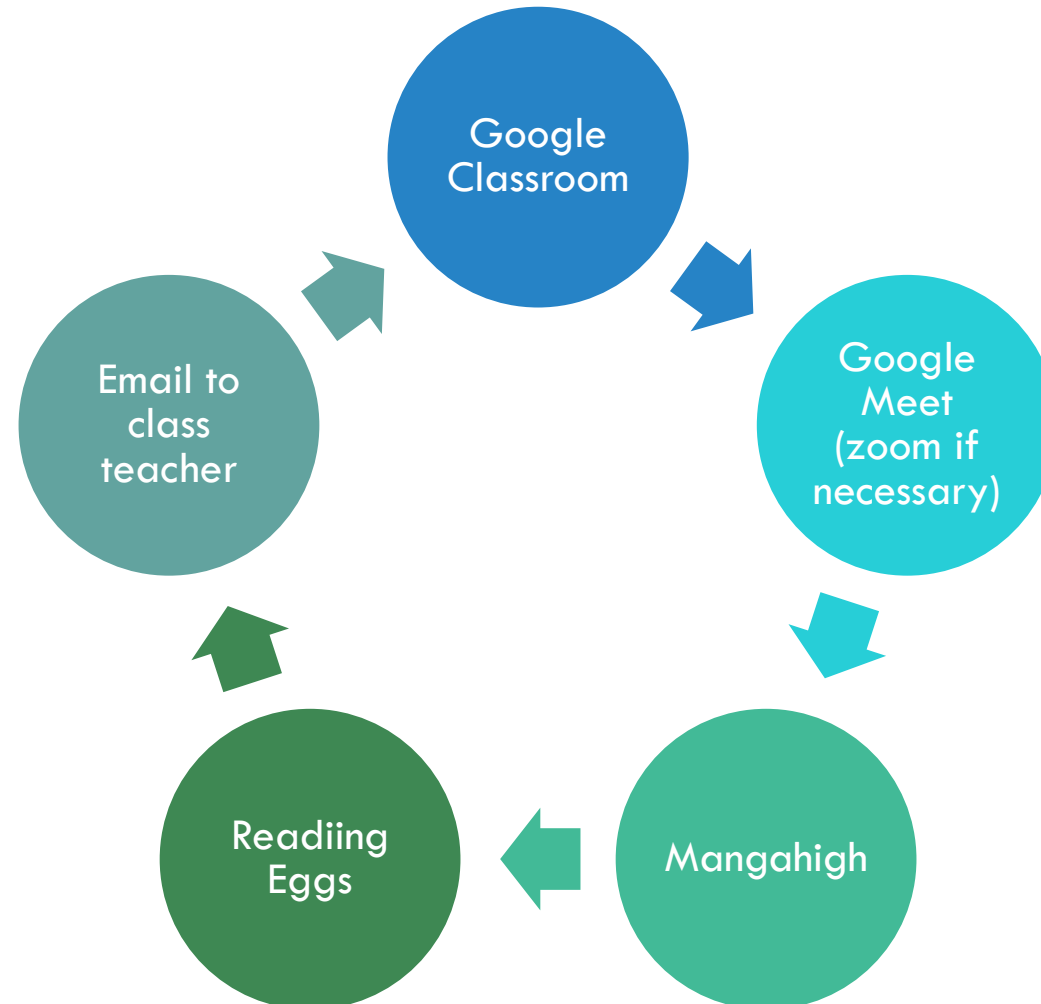


**GUIDANCE ON REMOTE LEARNING
IN A COVID-19 CONTEXT:
SEPTEMBER – DECEMBER 2020**

Powerstown ETNS



PLATFORMS USED IN PETNS



MY CHILD IS SICK

Your child's health and well-being is priority.

Contact GP for medical advice.

Please allow you child to rest and recuperate at home.

Child returns to school when 48 hours symptom free (if negative Covid)

Or

Parent contacts class teacher when child is fit to resume work when still self isolating / restricting movement (Covid positive)

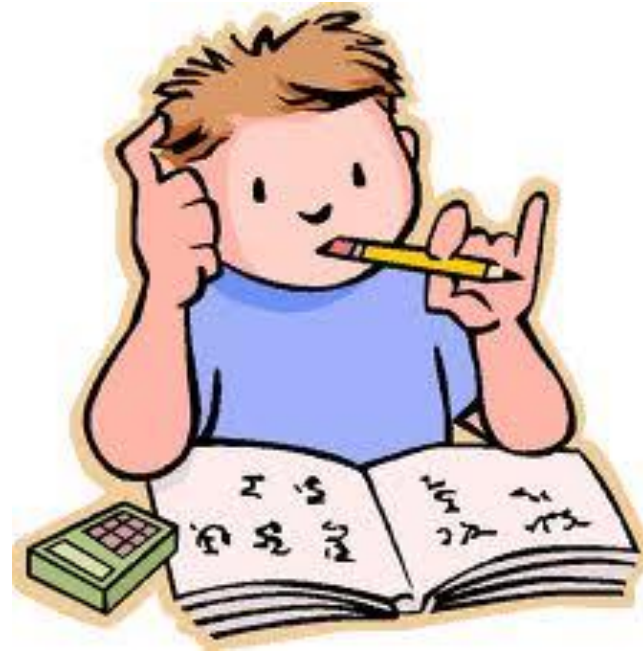


AN INDIVIDUAL PUPIL FROM A CLASS IS SELF-ISOLATING / RESTRICTING MOVEMENTS

Child engages in

1. Mangahigh
2. Reading Eggs
3. Homework assigned on Google Classroom
4. Parents access Monthly Plan for activity ideas
5. Bi –weekly check in with Support Teacher (at class well-being time)

Please email school/class teacher informing them of situation so staff can be informed to provide support for the duration of your child's absence



PUPILS IN A POD IN CLASSROOM ARE SELF ISOLATING / RESTRICTING MOVEMENTS

Child engages in

1. Daily check in with Support Teacher (at class well-being time)
2. Classwork assigned on Google Classroom based on teacher monthly plan
3. Engage in project work with peers remotely, where possible (& age appropriate)
4. Mangahigh
5. Reading Eggs



ALL PUPILS IN ONE/MORE CLASSES SELF ISOLATING/RESTRICTING MOVEMENTS

Child engages in

1. Daily check in with Class Teacher (at minimum)
2. Classwork assigned on Google Classroom
3. Engage in project work with peers remotely, where possible (& age appropriate)
4. Mangahigh
5. Reading Eggs

Teacher works from school *where possible* for normal school day (8.30am – 2.10pm)



TEACHER(S) SELF ISOLATING / RESTRICTING MOVEMENTS

- If class are still attending school, a substitute teacher/SET teacher will take class, supported by class teacher (if he/she is well)
- If class are self isolating/restricting movements, class teacher will support class (if well) as per previous slide.



SCHOOL IS CLOSED ON FOOT OF HSE ADVICE

- All teachers who are medically fit for work, provide remote teaching and learning as detailed in Slide 5.
- Substitute teachers will be employed (where possible) if a staff member is ill to provide remote teaching for pupils.



PARENT CHOOSES TO KEEP CHILD AT HOME

- All pupils are strongly encouraged to attend school, unless directed otherwise by a medical professional.
- School provides many social, emotional, linguistic and well-being opportunities for pupils on a daily basis, as well as curriculum development. These activities and interactions are not (easily) replicated at home or through a screen.
- If a parent chooses to keep a child at home with medical advice, the school is not obliged to support the child at home and parents are encouraged to contact Education Welfare Officer

Advice during COVID-19:
Back to school Advice for parents

New rules and routines to follow to keep everyone safe:

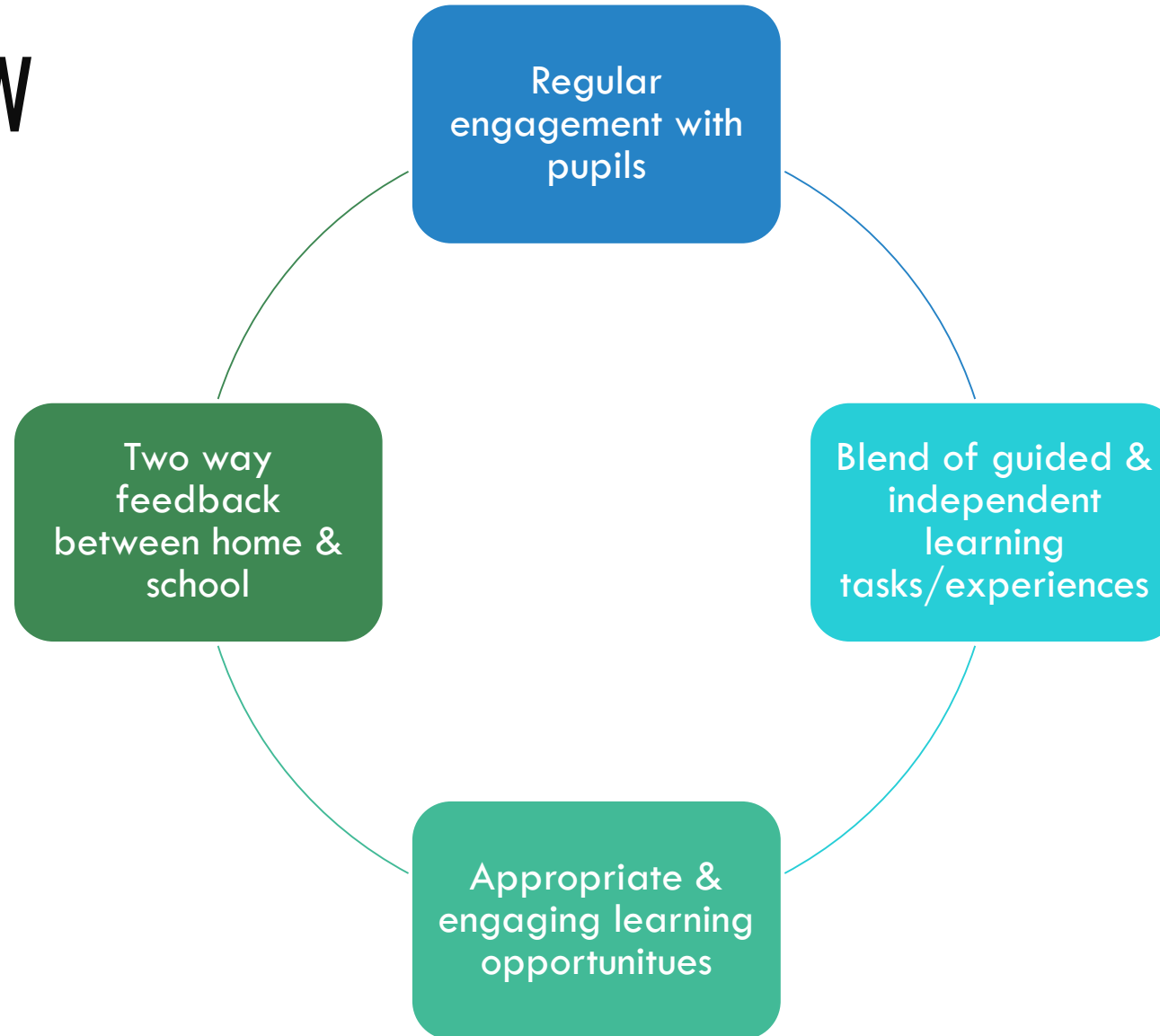
- Encourage your child to **walk or cycle to school** if possible and safe to do so.
- **School transport** - students will have an assigned seat and post-primary students will be required to wear a face covering when waiting for and when on-board the bus.
- **Schools will communicate directly with families** about reopening. **Talk together** at home about what to expect when going back to school.
- Having **healthy routines** in place will help with the adjustment of returning to school. Encourage your child to **gradually return to a school term bedtime routine**.
- **Help your child to eat healthily, take exercise and reconnect with friends.**
- Students who have Covid-19 symptoms, including a fever, a cough, shortness of breath or breathing difficulties, or loss or change to their sense of smell or taste should not attend school. **Please follow guidance on HSE** on self-isolation and **phone your doctor**. Make sure students know that if they feel unwell in school they should tell their teacher straight away.
- **Teachers understand that it hasn't been easy for young people to study at home during school closures.**

Remember, we all have a role to play in getting everyone back to school safely.

For more see [gov.uk/backtoschool](https://www.gov.uk/backtoschool)



OVERVIEW



REGULAR ENGAGEMENT WITH PUPILS

- Teacher will communicate with pupils on a daily basis; using Google Classroom, Google meets
- Some children may not be able to engage with remote teaching daily, however recordings of meetings will be accessible in Google Classroom.
- Support teachers will continue to engage with pupils regularly.

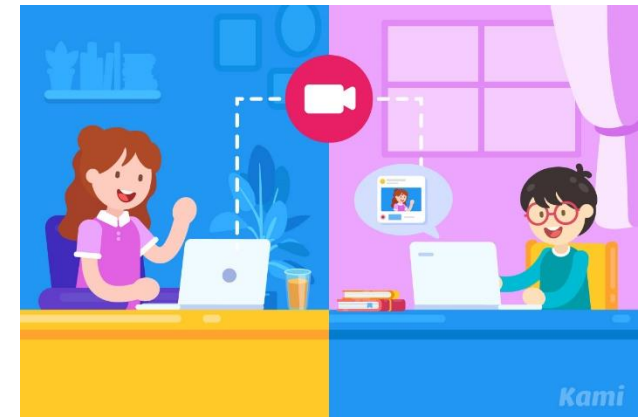


A BLEND OF GUIDED & INDEPENDENT LEARNING TASKS & EXPERIENCES

- Involves both DIRECT teaching by the teacher AND the assignment of independent learning tasks
- Where possible, direct instruction is provided for aspects of learning that require it, using a variety of approaches including pre-recorded video, audio, presentation software and written instruction
- Regular engagement via Google Meet will help pupils to reintegrate when they return to school



APPROPRIATE & ENGAGING LEARNING OPPORTUNITIES



Learning tasks: Tasks will be assigned to support high quality learning from home. Teachers will monitor progress and give constructive, developmental feedback.

Skills Development: Pupils will be supported to develop age appropriate self-management and organisation skills to enable them engage in remote learning

Transitions: Specific supports will be in place to support children with additional needs in their transition back to school, after a partial/full closure as required

Infant & Junior Classes: Parents/guardians may benefit from specific guidance to support their child at home, **when** in a position to do so. Home learning packs may be prepared for pupils to support skill development. Opportunities to learn from home using the home environment in an experiential way e.g. baking, cleaning, nature hunts, maths eyes etc will be maximised. Teacher will provide opportunities for children to share samples of learning activities with their peers

Gaeilge: A useful home tool is TG4 & COGG



TWO WAY FEEDBACK BETWEEN HOME & SCHOOL

- All teachers can be contacted via email
- Parents/guardians can request a phone call from teacher
- Parents/guardians can request a video meeting via zoom by emailing class teacher / support teacher
- Children are strongly encouraged to submit assignments and pictures/videos of work via Google Classroom
- Teachers will give regular feedback on pupils work during the school day in Google Classroom.
- Daily check ins will provide a sense of normality and connection for pupils!



HOW TO ACCESS REMOTE LEARNING

Contact your child's class teacher / school / principal

Inform teacher of absence

Inform teacher if child is ill

Request access to remote learning



Principal, class teacher and remote learning teacher meet

Discuss needs of child

Discuss classroom activities

Select activities that are appropriate for remote learning



Google Classroom/ Reading Eggs / Mangahigh

Work is assigned via google classroom. Child also completes Reading Eggs & Mangahigh assignments
Teacher may also organize Google Meet Check ins/zoom check ins



Unsure of assignment/ work assigned in Google classroom

Put message in google classroom, teacher will respond

Email teacher directly

Request a call back