



Powerstown Educate Together National School

Roll number 20384J
Powerstown Road, Tyrrelstown, Dublin 15
D15VR80
Telephone: 01 8272018
Email: info@powerstownet.com
www.powerstownet.com

POWERSTOWN EDUCATE TOGETHER NATIONAL SCHOOL

Safety, Health and Welfare Policy

THIS POLICY HAS BEEN FORMULATED BY POWERSTOWN ETNS TO BRING TO THE ATTENTION OF ITS STAFF THE FOLLOWING ARRANGEMENTS FOR SAFEGUARDING THE SAFETY, HEALTH AND WELFARE OF THOSE EMPLOYED AND WORKING IN THE SCHOOL. THIS POLICY FOLLOWS THE GUIDELINES DRAFTED BY HAS & DEPT. OF EDUCATION & SKILLS OUTLINED [HERE](#)

CONTENTS

Contents	2
Introductory Statement	5
Rationale	5
Aims	5
Safety, Health and welfare policy	5
School Profile	6
School size	6
School Building	7

Ground Floor Drawings:	7
First Floor Drawings:	7
Organisational Structure @PETNS:	8
Special Duties Teacher (with particular functions in safety, health and welfare)	9
Safety committee:	9
Safety representative:	9
Planning Procedures:	10
Provisions for Persons with Special Needs	11
Resources for Safety, Health and Welfare in PETNS	11
resources addressing issues of prime concern	11
Registration Form	11
Infectious Diseases	12
Sickness or Injury	12
Drugs and Medication	12
School hygiene	12
General cleanliness of school environment	12
Machinery, Kitchen equipment, Electrical appliances	12
Electrical Appliances	12
Chemicals	13
Welfare	13
Highly Polished Floors	13
Smoking	14
Manual Handling	14
Entering School grounds	14
Stress at the Workplace	14
Protective measures in place for safety, health and welfare in Powerstown ETNS	15
Roles and responsibilities for safety, health and welfare	16
Board of Management:	16
The Principal	16
Special Duties Teacher (with particular functions in safety, health and welfare)	17
Teachers / Special Needs Assistants / Non-teaching staff:	17

Other School Users:	17
Parents/Guardians	17
Visitor Control	18
Contractors:	19
Risk assessment	19
Risk Assessment Roles and Responsibilities	20
Emergency procedures, fire safety, first-aid, accidents and General Safety Health & Welfare Practices (PUPIL BASED)	20
Fire safety	20
FIRST AID	22
Daily Arrangements	23
Accidents and Injuries	26
Toileting and Intimate Care Needs	26
Critical Incident	27
Administration of Medication	27
Exceptional closures	27
Code of Behaviour and Anti Bullying Policy	27
Allegations or Suspicions of Child Abuse	27
School tours / outings	27
General Safety Health & Welfare Practices (STAFF BASED)	27
Garda clearance	27
Positive Staff Relations:	27
Assaults on Teachers/School Employees:	28
Instruction, training and supervision	29
Communication and consultation	30
Policy list	30
Appendix 1: Risk Assessment Templates	32
Appendix 2: PETNS School safety, health and welfare management audit tool	34
Appendix: Training chart	39
Appendix: Safety, health and welfare training record	41
Appendix: Communication	42
Appendix : Inspection check sheet	43

Inspection Template	44
Appendices 1: Risk Assessment Template. No. 9 Students Considerations	45
Appendix 1: Detailed Hazard Identification and Risk Assessment	46
Appendix 2: Accident Report Form	47

INTRODUCTORY STATEMENT

The Board of Management of Powerstown Educate Together National School (P.E.T.N.S.) brings to the attention of its staff the following arrangements for safeguarding the safety, health and welfare of those employed and working in the school.

This policy requires the co-operation of all employees. It shall be reviewed annually or more frequently if necessary, in the light of experience, changes in legal requirements and operational changes.

This policy implements the “Guidelines on Managing Safety, Health and Welfare in Primary Schools” published by HSA and Department of Education and Skills. [\(Click here to view these guidelines in full.\)](#)

RATIONALE

The Board of Management of Powerstown Educate Together National School undertakes to ensure that the provisions of the Safety, Health and Welfare at Work Act 2005 are adhered to.

The Board of Management of P.E.T.N.S. recognises that its statutory obligations under legislation extends to employees, students, to any person legitimately conducting school business, and to the public.

AIMS

The Board of Management of Powerstown Educate Together National School wishes to ensure that as far as is reasonably practical:

- The design, provision, and maintenance of all places in the school shall be safe and without risk to health.
- There shall be safe access to and from places of work.
- Work systems shall be planned, organised, performed, and maintained so as to be safe and without risk to health.
- Staff shall be instructed and supervised as far as is reasonably possible, so as to ensure the health and safety at work of all employees.
- Protective clothing or equivalent shall be provided as is necessary to ensure the safety and health at work of its employees.
- Plans for emergencies shall be complied with and revised as necessary.
- This statement will be continually revised by the Board of Management as necessity arises, and shall be re-examined by the Board on at least an annual basis.
- Employees shall be consulted on matters of health and safety.
- Provisions shall be made for the election by the employees of a Staff Health and Safety Officer.

SAFETY, HEALTH AND WELFARE POLICY

In accordance with the Safety, Health and Welfare at Work Act 2005, it is the policy of the Board of Management of Powerstown Educate Together National School to ensure, so far as is reasonably practicable,

the safety, health and welfare at work of all staff and to protect students, visitors, contractors and other persons at the school from injury and ill health arising from any work activity. The successful implementation of this policy requires the full support and active co-operation of all staff, students, contractors and visitors to the school.

It is recognised that hazard identification, risk assessment and control measures are legislative requirements which must be carried out by the employer to ensure the safety, health and welfare of all staff.

The Board of Management, as employer, undertakes in so far as is reasonably practicable to:

1. promote standards of safety, health and welfare that comply with the provisions and requirements of the Safety, Health and Welfare at Work Act 2005 and other relevant legislation, standards and codes of practice;
2. provide information, training, instruction and supervision where necessary, to enable staff to perform their work safely and effectively;
3. maintain a constant and continuing interest in safety, health and welfare matters pertinent to the activities of the school;
4. continually improve the system in place for the management of occupational safety, health and welfare and review it periodically to ensure it remains relevant, appropriate and effective;
5. consult with staff on matters related to safety, health and welfare at work;
6. provide the necessary resources to ensure the safety, health and welfare of all those to whom it owes a duty of care, including staff, students, contractors and visitors.

The Board of Management is committed to playing an active role in the implementation of this occupational safety, health and welfare policy and undertakes to review and revise it in light of changes in legislation, experience and other relevant developments.

The Powerstown Educate Together National School's working copy of the Safety Statement is located on file in the Principal's office and on the school website at www.powerstownet.com. It will be available for viewing by any employee. A copy of the Safety Statement is emailed to staff annually and is available on the internal school intranet for all staff. The Safety Statement is introduced to all new employees at their *Induction Training*.

SCHOOL PROFILE

Powerstown Educate Together National School is a 16 classroom, vertical, co-educational school with five special classes, located on Powerstown Road, Tyrrelstown in Dublin 15

SCHOOL SIZE

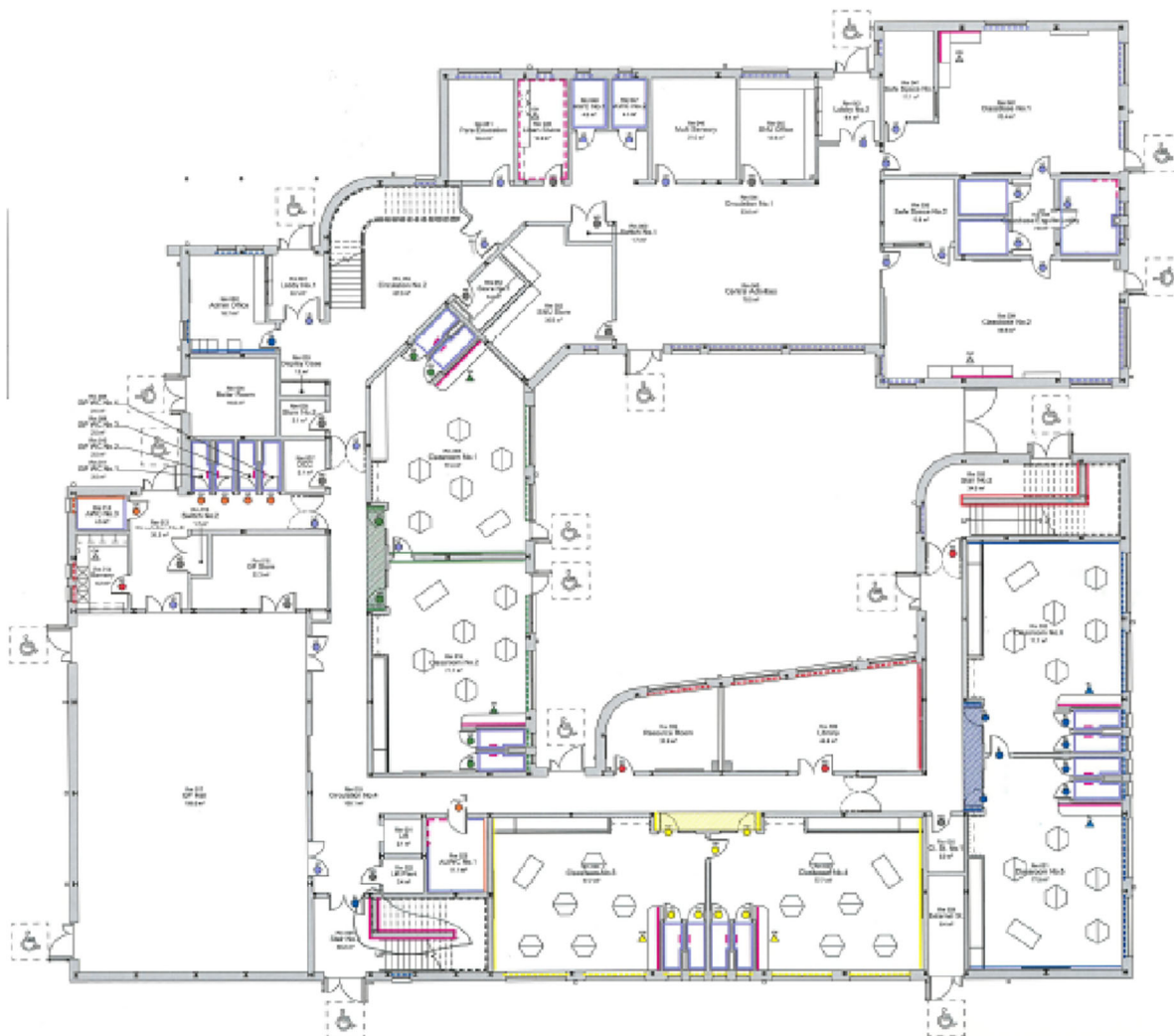
Powerstown ETNS has a staff of approximately 58 people (16 mainstream teachers, 12 SEN teachers, 5 special class teachers, 19 Special Needs Assistants (SNA's), 1 principal, 1 deputy principal, 1 caretaker, 1 secretary, 1 part time secretary and 1 part-time speech and language therapist). At present there are approximately 345 pupils enrolled in the school.

The school at different times throughout the year also has a number of adults, and second level students carrying out work experience with the staff throughout the year.

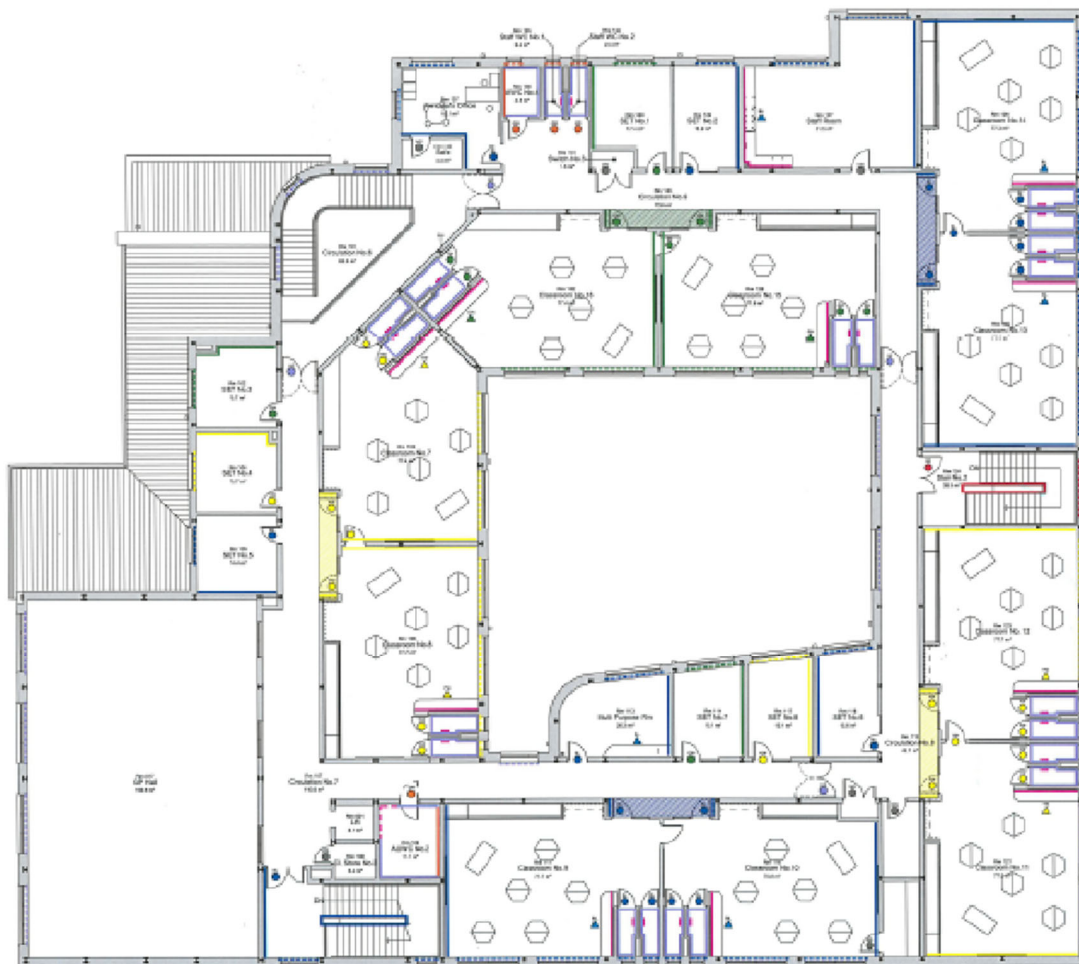
SCHOOL BUILDING

Powerstown ETNS permanent building structure was completed in August 2016. It is a 2-storey building, with 16 classrooms, an outreach unit, GP hall and ancillary accommodation. The school expanded in December 2022 and includes a temporary prefabricated building accommodating 2 classes and one support room. Please see drawings below;

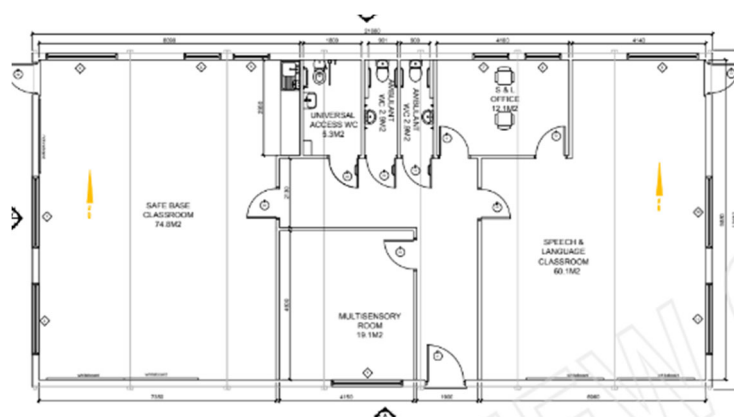
GROUND FLOOR DRAWINGS:



FIRST FLOOR DRAWINGS:



PREFAB DRAWINGS:



ORGANISATIONAL STRUCTURE @PETNS:

Safety, health and welfare is everyone's responsibility. The chart below reflects a whole school approach to the promotion and development of safety, health and welfare in Powerstown Educate Together National School.